

Cut and Glue the Manatees Puzzle

Ready

scissor



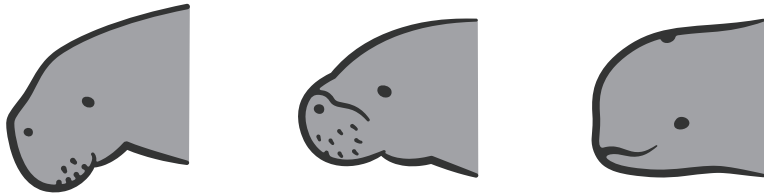
glue



Get your scissors and glue ready

1

Which one is the manatee's face?

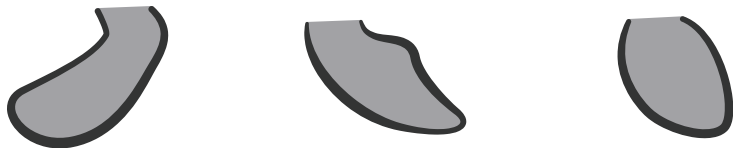


Tips

The shape of the face helps Manatees eat grasses floating on the water
Manatees easily find grasses with their many whiskers.

2

Which one is the manatee's chest fin?

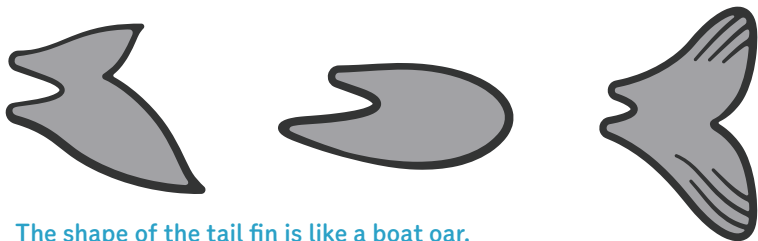


Tips

Manatees' chest fins move easily because they have elbows.
Manatees can gather floating grasses with these fins.

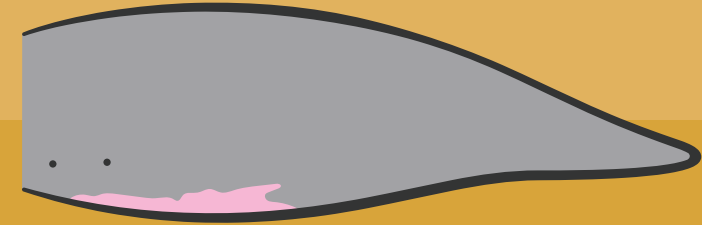
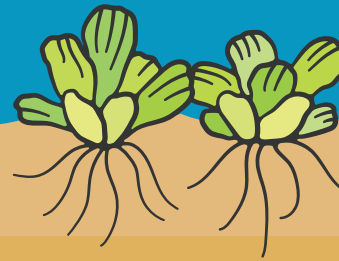
3

Which one is the manatee's tail fin?



Tips

The shape of the tail fin is like a boat oar.
Manatees cannot swim fast with their tail fins, but they can make small turns.



マナティー研究所
Japan Manatee Education and Study Lab.

よそみっこ
yosomikko

4



Let's cut out the face, chest fin, and tail fin
you chose and put them on the illustration above

5



Did you choose the correct ones? You can
find the correct answers on our website.



<https://www.manateelab.jp/puzzle>

6



Let's complete the manatee puzzle by cutting and
gluing the right pieces on the picture above.



Supervised by Japan manatee education and study lab

Designed by よそみっこ ©o.ogimoto

